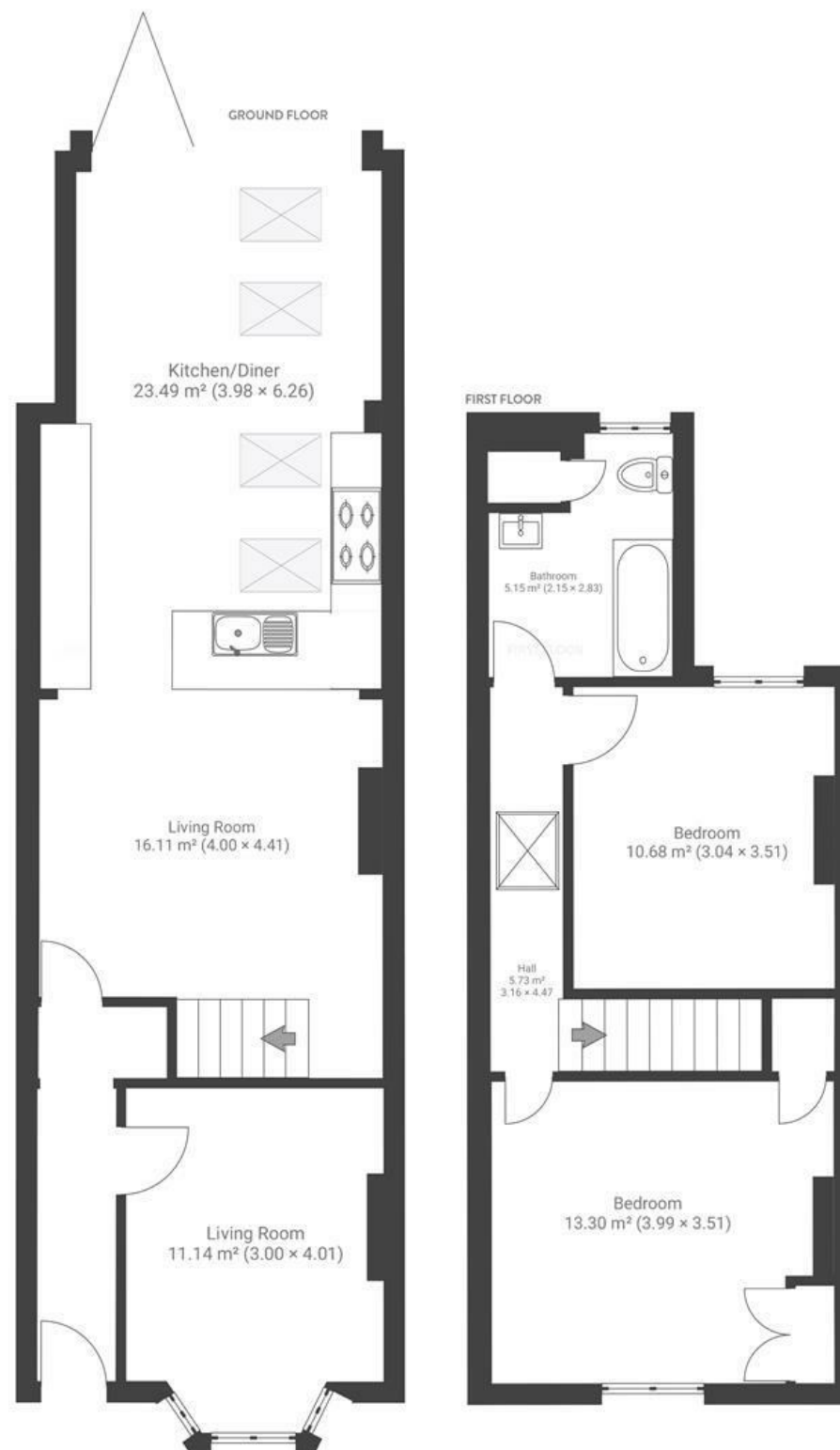


# Beryl Road

## BEDMINSTER

APPROXIMATE FLOOR AREA  
91.7 SQM / 987 SQFT



Boardwalk

# Beryl Road

, BRISTOL



£515,000



2 Bedrooms



BS3 3DH



1 Bathrooms

*"We love how our home is made for spending time with friends — from enjoying drinks in the evening sun on the patio to opening up the bifold doors during dinner on warm summer days. The open-plan kitchen is perfect for cooking and chatting with friends, and the generous garden has been a fantastic space to play with our dog. Having a separate study has also made working from home easy and comfortable, doubling as a handy third bedroom when guests stay over."*

